

COMPREHENSIVE HANDICAPPING REPORT (CHR)



Gulfstream Park

Kitten's Joy Stakes | Gulfstream Park R5

Saturday, January 31, 2026 | 1½ Miles Turf | 3YO Colts | Purse: \$175,000

PACE ANALYSIS

TRUE FRONT RUNNERS

- **Redland Rebels** - Elite gate speed, led gate-to-wire in maiden romp. Early pace figure 106 dominates field. Natural speed from rail duel, drew clear.
- **Khozalite** - Forward placement, stalked and pressed early in stakes victories. Posted :23⁴ opening quarter in turf maiden win.
- **Thousandsticks** - Inside speed, commanded lead immediately in recent wins. Rail duel greenly in debut, clear control last out.

MODEL PREDICTS: Moderate early pace with Alpyland/Thousandsticks controlling tempo (projected :23² opening quarter, :47³ half-mile). Multiple presser types create competitive but manageable fractions.

CLOSERS

FASTEST FINISHERS

- **Glorious Boy** - Deep closer, rallied six-wide from 9th at 1⅛m. Late pace figure 94 leads field. Explosive late kick in Pulpit Stakes victory.
- **Knoty Knicks** - Rail-to-split rally specialist. Late pace figure 92 shows strong finishing ability. Closed from 8th last out.
- **Turf Star** - Patient tactical type, stalked inside and surged late for maiden win. G2 Bourbon runner-up shows class closing punch.

MODEL PREDICTS: Moderate pace favors tactical types over pure closers. Deep closers need honest tempo without setup guarantees.

CLASS & CONSISTENCY

CLASS LEADERS

1. **Turf Star** - G1 BC Juvenile Turf runner (6th), G2 Bourbon Stakes runner-up. Beyer 76 with elite competition faced. Earnings: \$215,000.
2. **Alpyland** - Three consecutive turf wins including Dania Beach Stakes. Beyer 84 career-best. Perfect at GP (2-for-2). Earnings: \$196,896.
3. **Khozalite** - Florida Sire Affirmed Stakes winner. Faced multiple stakes tests. Proven class with Ortiz commitment. Earnings: \$194,450.

CONSISTENCY RATINGS

- **Alpyland:** 75% (3-for-4 turf, 2-for-2 at GP)
 - **Thousandsticks:** 50% (2-for-4, back-to-back GP wins)
 - **Turf Star:** 25% (1-for-4, two seconds)
 - **Glorious Boy:** 33% (2-for-6, includes stakes win)
 - **Chalky White:** 14% (1-for-7, maiden struggles)
-

IMPROVEMENT CANDIDATES

LIKELY IMPROVERS

- **Alpyland** - Third career turf start, perfect GP record. Mark Casse 16% turf routes. Posted career-best Beyer 84 last out defeating this field. Velazquez connection excels at venue.
- **Glorious Boy** - Second start on GP turf, learned course in stakes debut. Six-wide rally suggests fitness reserves. Late pace figure 94 elite for distance/class.
- **Turf Star** - Returns from 93-day layoff with Graham Motion (21% off layoff). G1 BC experience with maturity. Breeding (Caravaggio x Galileo) ideal for distance.

BOUNCE RISKS

- **Redland Rebels** - 181-day layoff since lone turf win. Zero workouts on turf since August. Outside post #8 negates inside speed advantage. Faces 600% class hike from maiden.
- **Khozalite** - Dirt-to-turf switch after poor effort (4th, beaten 10+ lengths). Only turf start was 1 $\frac{1}{8}$ m maiden five months ago. Inconsistent surface performance.
- **Chalky White** - Winless in six starts since August maiden score. Poor turf debut (9th in stakes). Zero GP experience, trainer 7% off layoff. Synthetic winner switching surfaces.

WIN PROBABILITY & FAIR ODDS

HORSE	WIN PROBABILITY	FAIR ODDS	LIKELY ODDS
Alpyland	45%	1-1	8-5
Thousandsticks	22%	7-2	4-1
Turf Star	12%	7-1	6-1
Glorious Boy	10%	9-1	8-1
Knoty Knicks	6%	15-1	12-1
Khozalite	3%	32-1	15-1
Chalky White	1%	99-1	30-1
Redland Rebels	1%	99-1	25-1

WAGER RECOMMENDATIONS

WIN WAGER ALPYLAND (Minimal Value) - Model predicts 45% win probability at projected 8-5 odds represents slight edge. Three consecutive turf wins, perfect 2-for-2 at GP including dominant Dania Beach Stakes victory. Posted career-best Beyer 84 defeating several returnees. Velazquez aboard all three wins. Mark Casse 25% GP meet. Tactical speed allows perfect stalking position. Only concern is prohibitive price, but clear class/form edge justifies win bet.

SECONDARY WAGER TURF STAR (Strong Value) - Model projects 12% win probability at projected 6-1 odds (6% edge). G2 Bourbon Stakes runner-up shows legitimate class. Graham Motion 29% GP meet, excels with layoff runners. G1 BC experience suggests maturity improvement. Breeding perfect for 1½m turf. Gaffalione switch from multiple mounts significant. Returns fresh after 93 days, typical Motion pattern. If pace heats up, closing punch threatens favorites.

MULTI-RACE WAGERS (Top 3 by Win Probability)

1. **Alpyland** (45%)
 2. **Thousandsticks** (22%)
 3. **Turf Star** (12%)
-

MODEL CONFIDENCE: VERY HIGH - Clear class separation with Alpyland dominating based on recent form, course experience, and proven GP success. Turf Star offers legitimate value as fresh closer with elite connections and proven class. Thousandsticks dangerous but faces proven superior in Alpyland who defeated him decisively in Dania Beach.

Swale Stakes | Gulfstream Park R8
Saturday, January 31, 2026 | 7 Furlongs Dirt | 3YO Colts | Purse: \$175,000

PACE ANALYSIS

TRUE FRONT RUNNERS

- **Solitude Dude** - Elite natural speed, posted :22² opening quarter in Inaugural Stakes wire job. Early pace figure 112 dominates field. Led gate-to-wire both starts.

- **Epic Summer** - Sharp gate speed, contested lead in debut win with :22² opening quarter. Showed speed in recent Mucho Macho Man Stakes before fading.
- **Langvad** - Forward placement, led gate-to-wire at 7f maiden win. Posted :22¹ opening quarter, natural front-runner.

MODEL PREDICTS: Blazing early pace with Solitude Dude controlling tempo (projected :22¹ opening quarter, :44⁴ half-mile). Speed duel likely between 2-3 horses.

CLOSERS

FASTEST FINISHERS

- **Class President** - Rail-to-four-wide rally from 3rd, covered final quarter in :24³. Late pace figure 102 tops field significantly.
- **Diciassette** - Patient style, waited until quarter pole to launch bid in Proud Man Stakes win. Late pace figure 86 shows solid closing kick.
- **Hammond** - Tactical closer, stalked and pounced at proper moment. Posted :32¹ final fraction in Juvenile Sprint Stakes victory.

MODEL PREDICTS: Explosive early pace sets up perfectly for deep closers with tactical positioning. Hot tempo collapses speed horses.

CLASS & CONSISTENCY

CLASS LEADERS

1. **Solitude Dude** - Undefeated (2-for-2), Inaugural Stakes winner. Beyer 87 career-best towers over field. Demolishing margins (17+ combined lengths).
2. **Diciassette** - G1 Breeders' Futurity 4th (beaten by champion), Proud Man Stakes winner. Proven graded stakes experience.
3. **Hammond** - Juvenile Sprint Stakes winner. Two consecutive victories with ascending Beyers (64-71-86).

CONSISTENCY RATINGS

- **Solitude Dude:** 100% (2-for-2, combined 17+ length margins)
- **Hammond:** 67% (2-for-3, back-to-back wins)
- **Diciassette:** 67% (2-for-3, includes G1 effort)
- **Class President:** 100% (1-for-1, debut winner)
- **Epic Summer:** 50% (1-for-2, tired last out)

IMPROVEMENT CANDIDATES

LIKELY IMPROVERS

- **Class President** - Debut winner for Todd Pletcher (29% with winners second start). Uncle Mo breeding suggests distance stretch perfect. Tactical speed suits pace scenario. Velazquez upgrade, bullet work suggests sharpness.
- **Diciassette** - First start since October 4th (119 days). Patrick Biancone excels with layoff runners (20% return). G1 experience with maturity suggests upside. Hot pace setup ideal for closing style.
- **Hammond** - Third start pattern, ascending Beyers (64-71-86 progression). Proven at distance, tactical speed allows perfect stalking position behind speed duel.

BOUNCE RISKS

- **Solitude Dude** - Undefeated record faces reality check against superior competition. Early pace figure 112 suggests aggressive style vulnerable to pace pressure. Never challenged in two starts.
- **Epic Summer** - Second off layoff pattern negative (68 Beyer regression). Tired badly in route attempt at 1 $\frac{1}{16}$ m, suggests stamina limitations. Route-to-sprint bounce angle.
- **Langvad** - Weak Beyer pattern (53-61), significantly below stakes level. Lost badly to Solitude Dude last out despite distance advantage. Limited upside.

WIN PROBABILITY & FAIR ODDS

HORSE	WIN PROBABILITY	FAIR ODDS	LIKELY ODDS
Solitude Dude	42%	6-5	4-5

HORSE	WIN PROBABILITY	FAIR ODDS	LIKELY ODDS
Class President	24%	3-1	7-2
Hammond	16%	11-2	5-1
Diciassette	12%	7-1	8-1
Epic Summer	5%	19-1	12-1
Langvad	1%	99-1	40-1

WAGER RECOMMENDATIONS

WIN WAGER CLASS PRESIDENT (Significant Value) - Model predicts 24% win probability at projected 7-2 odds (8% edge). Perfect pace scenario with Solitude Dude pressing suicidal fractions. Pletcher 29% with debut winners second start, elite Velazquez connection. Uncle Mo x Quality Road breeding screams 7f. Bullet work :48² suggests razor-sharp fitness. Tactical speed allows saving ground, then four-wide explosion like debut victory. Rail post concern mitigated by tactical positioning.

SECONDARY WAGER HAMMOND (Value Overlay) - Model projects 16% win probability at projected 5-1 odds (4% edge). Ascending Beyer pattern (64-71-86) points to continued improvement. Proven stakes winner at Gulfstream. Perfect stalking trip behind speed duel. Joseph 22% with winners repeating. Zayas connection strong at GP meet. Half-brother to stakes winner suggests class pedigree.

MULTI-RACE WAGERS (Top 3 by Win Probability)

1. **Solitude Dude** (42%) - Speed/class edge despite vulnerable style
2. **Class President** (24%)
3. **Hammond** (16%)

MODEL CONFIDENCE: VERY HIGH - Predictable pace scenario heavily favors closers. Solitude Dude faces first legitimate test with speed pressure. Class President offers exceptional value as fresh, tactical Pletcher runner with perfect setup and elite connections.

Grade 3 Forward Gal Stakes | Gulfstream Park R10
Saturday, January 31, 2026 | 7 Furlongs Dirt | 3YO Fillies | Purse: \$175,000

PACE ANALYSIS

TRUE FRONT RUNNERS

- **Mythical** - Elite gate speed, contested lead in 5 of 6 career starts. Posted :21⁴ opening quarter in Adirondack G3 win, :22¹ in recent stakes victory.
- **On Time Girl** - Natural presser, stalked within striking distance in all four starts. Posted :22² opening quarters, challenges early from stalking position.
- **Imperatrice** - Speed from rail, led gate-to-wire in maiden win. Early pace figure 105 shows tactical speed.

MODEL PREDICTS: Aggressive early pace with multiple speed types (projected :22³ opening quarter, :45² half-mile). Hot tempo sets up closers.

CLOSERS

FASTEST FINISHERS

- **Sneaky Good** - Dramatic style switch second start, rallied from 7th position to win Sandpiper Stakes. Late pace figure 74 with six-wide move shows acceleration.
- **Music Burst** - Angled five-wide for steady gain in last start, closed from 4th. Shows ability to finish despite traffic.
- **Hollen Drive** - Four-wide move on turn to clear, shows closing punch last out with :32² final fraction.

MODEL PREDICTS: Contested pace strongly favors late-running fillies with tactical positioning.

CLASS & CONSISTENCY

CLASS LEADERS

1. **Mythical** - Five wins including G3 Adirondack, G1 Tremont Stakes. Beyer 93 career best demolishes field. Earnings: \$540,750.

2. **On Time Girl** - Three wins including Fern Creek Stakes (\$225K), Myrtlewood Stakes (\$250K). Beyer 82 second-best. Earnings: \$315,525.
3. **Sneaky Good** - Two-for-two including Sandpiper Stakes victory. Elite Into Mischief breeding from Brad Cox barn.

CONSISTENCY RATINGS

- **Mythical**: 83% (5-for-6, lone loss was G1 Spinaway fade)
 - **On Time Girl**: 75% (3-for-4, one second-place finish)
 - **Sneaky Good**: 100% (2-for-2)
 - **Tessellate**: 60% (3-for-5)
 - **Imperatrice**: 50% (1-for-2, maiden company only)
-

IMPROVEMENT CANDIDATES

LIKELY IMPROVERS

- **Sneaky Good** - Second career start for Brad Cox (29% with winners next out). Dramatic style improvement shows versatility. Stretch out from 6f to 7f suits closing style with Into Mischief stamina breeding.
- **On Time Girl** - Nine weeks between starts suggests freshening. Posted career-best Beyer 82 last out, crushing stakes field. Cox 26% dirt, elite Ortiz connection. Florida debut with maturity edge.
- **Imperatrice** - Second start for Todd Pletcher (29% with debut winners). Posted 16-point Beyer improvement second time. Velazquez upgrade from Franco.

BOUNCE RISKS

- **Mythical** - Five consecutive races without break, potential fatigue factor. Lone loss came in G1 Spinaway when overmatched by older competition after hot pace duel.
- **Music Burst** - Zero Gulfstream experience, trainer 0-for-7 to start meet. Longest distance test, unproven beyond 6f. Last-out runner-up suggests possible regression.
- **Secane** - Two consecutive stakes defeats after maiden win. Career-low Beyer 70 when failing to make lead in Tempted Stakes. Route-to-sprint angle questionable.

WIN PROBABILITY & FAIR ODDS

HORSE	WIN PROBABILITY	FAIR ODDS	LIKELY ODDS
Mythical	38%	8-5	6-5
On Time Girl	28%	5-2	3-1
Sneaky Good	18%	9-2	5-1
Tessellate	8%	11-1	8-1
Imperatrice	5%	19-1	12-1
Secane	2%	49-1	20-1
Hollen Drive	1%	99-1	30-1

WAGER RECOMMENDATIONS

WIN WAGER ON TIME GIRL (Value Overlay) - Model predicts 28% win probability at projected 3-1 odds (4% edge). Best-last-race Beyer 82, nine-week freshening with elite Cox/Ortiz combo dominates GP meet. Hot pace setup perfect for stalking style. Lone concern is Florida debut, but class and connections override surface concern. Mythical faces pressure duel which compromised her in G1 Spinaway loss.

SECONDARY WAGER SNEAKY GOOD (Strong Value) - Model projects 18% win probability at projected 5-1 odds (7% edge). Dramatic tactical improvement second start mirrors classic Cox pattern. Six-wide rally in Sandpiper suggests untapped reserves. Stretch out to 7f with closing style exploits hot pace. \$450K yearling purchase shows belief in ability. Gaffalione switches from Tessellate to this runner—significant jockey move.

MULTI-RACE WAGERS (Top 3 by Win Probability)

1. **Mythical** (38%) - Speed/class edge despite bounce risk
 2. **On Time Girl** (28%)
 3. **Sneaky Good** (18%)
-

MODEL CONFIDENCE: HIGH - Clear pace scenario favors tactical/closing types. On Time Girl offers best combination of class, form, and value at projected odds. Sneaky Good represents significant overlay for exacta/trifecta construction.

Sweet Chant Stakes | Gulfstream Park R11
Saturday, January 31, 2026 | 1 $\frac{1}{8}$ Miles Turf | 3YO Fillies | Purse: \$175,000

PACE ANALYSIS

TRUE FRONT RUNNERS

- **Spirit Doll** - Natural speed from gate, contested early lead in Our Dear Peggy win. Posted :23³ opening quarter on firm turf consistently.
- **Sister Troienne** - Prominent early positioning, established :24¹ opening quarter in Ginger Brew win. Dictates tempo from stalking position.
- **Aggressive Lime** - Forward placement, commanded lead after quarter-mile in maiden win. Early pace figure 79 shows tactical speed.

MODEL PREDICTS: Moderate early pace with Sister Troienne controlling tempo (projected :24² opening quarter, :48¹ half-mile).

CLOSERS

FASTEST FINISHERS

- **One Sweet Girl** - Deep closer who rallied from 9th at 1 $\frac{1}{8}$ m, covered final fraction in explosive :24¹. Late pace figure 91 tops field.
- **Storm's Wake** - Devastating late kick from 7th in allowance win (:28³ final quarter). Late pace figure 92 elite for distance.
- **Surprise Ending** - Maiden winner closed from 6th with six-wide rally. Debut performance shows untapped acceleration.

MODEL PREDICTS: Controlled pace favors tactical runners over pure closers. Deep closers need honest tempo to be effective.

CLASS & CONSISTENCY

CLASS LEADERS

1. **Sister Troienne** - Four consecutive wins including Ginger Brew Stakes. Beyer 81 career best. Only runner with multiple stakes victories.
2. **Day to Day** - G1 Spinaway stakes experience, G2 Miss Grillo runner. Faced far superior competition.
3. **Storm's Wake** - Stakes-placed in Ginger Brew. Consistent turf form with allowance win over N2L runners.

CONSISTENCY RATINGS

- **Sister Troienne**: 100% (4-for-5, 1 second-place finish)
 - **Surprise Ending**: 100% (1-for-1)
 - **Aggressive Lime**: 67% (2-for-3)
 - **Spirit Doll**: 67% (2-for-3, G1 eased)
 - **Spicy Princess**: 13% (1-for-8, maiden struggles)
-

IMPROVEMENT CANDIDATES

LIKELY IMPROVERS

- **Surprise Ending** - Powerful debut winner stretching out from 1m to 1 $\frac{1}{8}$ m with Brendan Walsh (18% routes). Wide trip suggests more available. Breeding favors added distance.
- **Storm's Wake** - Second off 73-day layoff for Brian Lynch (30% second-off-layoff). Needed last race fitness-wise, strong late close.
- **Aggressive Lime** - Elite Brad Cox barn (26% overall) returns after 73-day freshening. G2 Jessamine experience with maturity suggests upside.

BOUNCE RISKS

- **Spicy Princess** - Eight lifetime starts, finally broke maiden on synthetic 13 days ago. Quick turnaround to stakes level, winless on turf (0-for-5).
- **One Sweet Girl** - Sharp last-out winner but massive class hike from N1X optional claimer. Beyer 70 significantly below stakes level.
- **Day to Day** - Third off layoff, declining Beyer pattern (70-67-54). Failed in both G1 and G2 attempts. Versatility suggests surface uncertainty.

WIN PROBABILITY & FAIR ODDS

HORSE	WIN PROBABILITY	FAIR ODDS	LIKELY ODDS
Sister Troienne	48%	1-1	4-5
Surprise Ending	18%	9-2	6-1
Aggressive Lime	12%	7-1	5-1
Spirit Doll	10%	9-1	8-1
Storm's Wake	7%	13-1	10-1
Brat Pack	3%	32-1	15-1
Day to Day	2%	49-1	20-1

WAGER RECOMMENDATIONS

WIN WAGER SISTER TROIENNE (No value) - Model predicts 48% win probability at projected 4-5 odds represents no overlay. Four-race win streak, Beyer advantage, proven at distance, Brian Lynch 33% win rate. Gutierrez aboard all four wins. Dominant front-running style controls tempo. Pass for win betting due to prohibitive odds.

SECONDARY WAGER SURPRISE ENDING (Significant Value) - Model projects 18% win probability at projected 6-1 odds (8% edge). Powerful debut winner stretching out with elite Brendan Walsh angle (23% debut winners second start over 5 years). Six-wide rally suggests fitness reserves. Gaffalione upgrade adds value. Breeding (Bolt d'Oro x Regal Ransom) screams 1½m improvement.

MULTI-RACE WAGERS (Top 3 by Win Probability)

1. **Sister Troienne** (48%)
 2. **Surprise Ending** (18%)
 3. **Aggressive Lime** (12%)
-

MODEL CONFIDENCE: VERY HIGH - Prohibitive favorite with clear class edge, but second choice offers genuine value based on improvement trajectory and trainer pattern.

Grade 3 Holy Bull Stakes | Gulfstream Park R12
Saturday, January 31, 2026 | 1⅛ Miles Dirt | 3YO | Purse: \$275,000

PACE ANALYSIS

TRUE FRONT RUNNERS

- **Cannoneer** - Aggressive gate speed, led wire-to-wire debut at 7f in :22² :22⁴. Natural stalker/presser who dictates tempo.
- **Buetane** - Forward from gate, posted :22¹ opening quarter in G2 San Vicente. Shows :22² early fractions consistently.
- **Game for It** - Sharp gate action, grabbed lead immediately last out with :23² opening quarter at 6f.

MODEL PREDICTS: Three-horse speed duel creates contested early pace (projected :24¹ opening quarter, :48³ half-mile).

CLOSERS

FASTEST FINISHERS

- **Incredibolt** - Overcame 7th early in G3 Iroquois to win by 1¼L. Final fraction :24³ off :48⁴ half shows explosive turn-of-foot.
- **Project Ace** - Rail rally specialist. Closed from 7th at 1⅛m maiden win in final time 1:50⁴. Late pace figure 99 leads field.

MODEL PREDICTS: Hot pace sets up perfectly for deep closers with tactical speed.

CLASS & CONSISTENCY

CLASS LEADERS

1. **Buetane** - G1 Hopeful runner-up, G2 San Vicente runner-up. Only horse with multiple graded stakes experience. Beyer 92 career top.

2. **Nearly** - Two-for-two including recent dominant allowance win. Beyer 97 career best towers over field.
3. **Cannoneer** - \$1.75M yearling from elite Brad Cox barn. Breeding suggests class will emerge.

CONSISTENCY RATINGS

- **Nearly**: 100% (2-for-2)
 - **Bravaro**: 100% (2-for-2)
 - **Incredibolt**: 67% (2-3-0 record)
 - **Roger That Dana**: 33% (1-3 record shows inconsistency)
-

IMPROVEMENT CANDIDATES

LIKELY IMPROVERS

- **Nearly** - Sprint-to-route angle with Todd Pletcher (19% striker routes). Third career start, added distance suits closer profile. Dominant local form.
- **Incredibolt** - Second off layoff with Riley Mott (15% win rate). G3 stakes winner stretching out after sharp gate works. Physical maturity evident.
- **Cannoneer** - Natural progression from 7f debut to 1 $\frac{1}{8}$ m. Cox runners excel second start after layoff. Elite breeding.

BOUNCE RISKS

- **Roger That Dana** - Third consecutive graded attempt after quick turnaround (8 weeks). Class ceiling likely reached.
 - **Game for It** - Lone career start was 6f sprint 52 days ago. Route debut against stakes company presents massive class/distance jump.
 - **Global Aviator** - Single career start (6f maiden) stretching to 1 $\frac{1}{8}$ m. Shallow form, questionable stamina.
-

WIN PROBABILITY & FAIR ODDS

HORSE	WIN PROBABILITY	FAIR ODDS	LIKELY ODDS
Nearly	42%	5-6	6-5
Buetane	22%	7-2	5-2

HORSE	WIN PROBABILITY	FAIR ODDS	LIKELY ODDS
Incredibolt	18%	9-2	4-1
Cannoneer	12%	7-1	8-1
Bravaro	4%	24-1	12-1
Project Ace	2%	49-1	20-1

WAGER RECOMMENDATIONS

WIN WAGER NEARLY (2% advantage) - Model predicts 42% win probability at projected 6-5 odds represents marginal value. Undefeated locally, dominant Beyer advantage, ideal pace setup, elite Pletcher/Velazquez combination. Only concern: route debut, but breeding/running style mitigate risk.

SECONDARY WAGER

INCREDIBOLT (Value Overlay) - Model projects 18% win probability at projected 4-1 odds (5% edge). Hot pace favors his closing kick. Mott second-off-layoff angle, proven G3 winner, sharp recent works. If speed collapses early, becomes primary threat.

MULTI-RACE WAGERS (Top 3 by Win Probability)

1. **Nearly** (42%)
2. **Buetane** (22%)
3. **Incredibolt** (18%)

Santa Anita

Grade 2 San Pasqual Stakes | Santa Anita R4
Saturday, January 31, 2026 | 1 $\frac{1}{8}$ Miles Dirt | 4YO+ | Purse: \$200,000

PACE ANALYSIS

TRUE FRONT RUNNERS

- **Pony Express** - Elite gate speed, led gate-to-wire in both career victories. Early pace figure 127 demolishes field. Posted :22² opening quarters consistently.

- **Getaway Car** - Natural speed demon, dueled inside in all three wins. Early pace figure 121 shows aggressive style. Won G3 Best Pal wire-to-wire.
- **Bartholdy** - Forward from gate, contested lead in all four victories. Early pace figure 122 matches Getaway Car. Pressed and cleared multiple times.

MODEL PREDICTS: Suicidal early pace with three elite speed horses (projected :22¹ opening quarter, :44² half-mile). Speed duel will be brutal and decisive.

CLOSERS

FASTEST FINISHERS

- **Ghazaaly** - Patient stalker/closer, rallied from 4th last out. Late pace figure 88 shows solid closing ability. Proven distance horse.
- **Midnight Mammoth** - Tactical presser who can close, posted late pace figure 80. Rallied from 2nd position last out for victory.
- **Westwood** - Mid-pack to closer, late pace figure 81 with ability to sustain rally. Best finishes when tracking hot pace.

MODEL PREDICTS: Explosive early pace creates perfect setup for closers with tactical positioning. Speed collapse inevitable with three horses battling.

CLASS & CONSISTENCY

CLASS LEADERS

1. **Getaway Car** - G1 Del Mar Futurity winner (led/faded), G2 Los Alamitos Futurity runner-up. Multiple Grade 1 placings. Beyer 92 career-best. Earnings: \$616,300.
2. **Pony Express** - Tokyo City Stakes runner-up (caught late). Beyer 101 field-best at shorter distance. Gun Runner breeding suggests class. Earnings: \$119,599.
3. **Midnight Mammoth** - G2 Gold Cup runner-up, G3 Cougar II winner. Multiple graded stakes experience. Beyer 99 career-best. Earnings: \$460,380.

CONSISTENCY RATINGS

- **Midnight Mammoth:** 24% (9-for-38, veteran consistency)
- **Pony Express:** 25% (2-for-8, limited sample)
- **Getaway Car:** 33% (3-for-9, high-class competition)
- **Bartholdy:** 20% (4-for-20, improving trend)
- **Westwood:** 11% (1-for-9, inconsistent)

IMPROVEMENT CANDIDATES

LIKELY IMPROVERS

- **Midnight Mammoth** - Posted career-best Beyer 99 off 139-day layoff, wheels back in 15 days. Natural stalker avoids speed suicide. Distance proven (G2 Gold Cup runner-up at 1¼m). Craig Dollase 38% meet.
- **Westwood** - Removes blinkers first time, tactical adjustment after front-running failure. Proven at distance (G1 SA Derby 3rd at 1½m). Benefits from certain pace meltdown.
- **Ghazaaly** - Fresh off claiming win, Doug O'Neill 21% SA meet. Jaramillo 22% strikes, barn excels 37% with this duo. Perfect stalking setup behind pace duel.

BOUNCE RISKS

- **Getaway Car** - Zero starts since November 30th (62-day layoff). Sprint-to-route after 6½f fade. Two consecutive defeats, faded badly at 1½m last try (6th, beaten 10 lengths). Three-horse speed duel exposes stamina questions.
- **Pony Express** - Disastrous only try at 1½m (6th, beaten 30+ lengths) in G2 Jim Dandy. Posted field-best Beyer at 1m, but 0-for-1 stretching out. Speed figure 69 at distance catastrophic.
- **Bartholdy** - Zero wins beyond 7f, faded to 3rd in G2 La Brea at 1½m last out. Stamina unproven, speed duel compromises style. 0-for-2 in graded stakes.

WIN PROBABILITY & FAIR ODDS

HORSE	WIN PROBABILITY	FAIR ODDS	LIKELY ODDS
Getaway Car	32%	2-1	2-1

HORSE	WIN PROBABILITY	FAIR ODDS	LIKELY ODDS
Midnight Mammoth	28%	5-2	9-2
Pony Express	18%	9-2	9-5
Ghazaaly	12%	7-1	10-1
Westwood	6%	15-1	8-1
Bartholdy	4%	24-1	4-1

WAGER RECOMMENDATIONS

WIN WAGER MIDNIGHT MAMMOTH (Significant Value) - Model predicts 28% win probability at projected 9-2 odds (7% edge). Perfect pace scenario with three speed horses destroying each other. Tactical stalking position saves ground, allows late rally. Posted career-best Beyer 99 fresh off layoff, proven sharp. Distance tested (G2 Gold Cup runner-up at 1¼m). Craig Dollase 38% SA meet, hot trainer. Front-runner style in 9-for-9 wins suggests comfort tracking pace. Speed duel guarantees setup.

SECONDARY WAGER GHAZAALY (Strong Value) - Model projects 12% win probability at projected 10-1 odds (10% edge). Fresh claiming victory with ascending pattern. O'Neill/Jaramillo combo 37% at SA. Patient stalking style perfect for pace meltdown. Proven at 1⅛m (multiple route efforts). Eight-year-old veteran knows how to capitalize on pace scenarios. Curlin breeding ensures stamina. Massive overlay if speed collapses as predicted.

MULTI-RACE WAGERS (Top 3 by Win Probability)

1. **Getaway Car** (32%) - Class/speed edge despite distance concerns
2. **Midnight Mammoth** (28%)
3. **Pony Express** (18%)

MODEL CONFIDENCE: VERY HIGH - Suicidal pace scenario absolutely certain with three elite speed horses. Getaway Car faces legitimate stamina questions after fade at distance. Midnight Mammoth offers exceptional value as proven router with perfect tactical setup. Speed horses eliminating each other creates rare overlay opportunity on closers. Ghazaaly represents massive longshot value at 10-1.

Grade 3 Megahertz Stakes | Santa Anita R7
Saturday, January 31, 2026 | 1 Mile Turf | 4YO+ Fillies & Mares | Purse:
\$100,000

PACE ANALYSIS

TRUE FRONT RUNNERS

- **Violeta M (Arg)** - Elite speed from gate, led gate-to-wire in multiple Argentine stakes. Early pace figure 122 demolishes field. Natural front-runner.
- **Princesa Moche (Per)** - Forward speed, contested lead in Las Cienegas G3 last out. Early pace figure 103 shows tactical speed. Posted :22² opening quarters.
- **Going Lucky** - Natural speed, pressed pace in debut turf win. Early pace figure 106 suggests forward placement.

MODEL PREDICTS: Moderate pace with Princesa Moche controlling tempo (projected :23³ opening quarter, :47² half-mile). Argentine import's speed may press or contest.

CLOSERS

FASTEST FINISHERS

- **Sigh No More (Ire)** - Deep closer, rallied from 8th in previous starts. Late pace figure 106 leads field significantly. Patient tactical style.
- **Public Assembly** - Powerful closer, late pace figure 107 tops field. Posted devastating rallies in G3 Royal Heroine win. Best finishing kick.
- **My Perfect Wave** - Late rally specialist, closed from 9th last out for victory. Late pace figure 97 shows strong closing ability.

MODEL PREDICTS: Moderate pace favors tactical types over pure closers. Deep closers need honest tempo but setup not guaranteed.

CLASS & CONSISTENCY

CLASS LEADERS

1. **Public Assembly** - G1 Gamely Stakes 5th, G2 Yellow Ribbon runner-up, G3 Royal Heroine winner. Multiple graded stakes placings. Beyer 91 career-best. Earnings: \$308,166.
2. **Vibez** - G3 Swingate Stakes winner at this course/distance. Proven at level. Beyer 90 career-best. Consistent performer. Earnings: \$228,530.
3. **Will Then** - G1 American Oaks 3rd, G2 San Clemente 3rd. Multiple Grade 1 experience. Proven class performer. Earnings: \$239,164.

CONSISTENCY RATINGS

- **Vibez**: 27% (4-for-15, three wins at this distance)
 - **Going Lucky**: 75% (3-for-4, perfect turf debut)
 - **Princesa Moche (Per)**: 29% (11-for-38, G3 stakes winner)
 - **Public Assembly**: 25% (3-for-12, multiple graded stakes)
 - **My Perfect Wave**: 50% (2-for-4, back-to-back wins)
-

IMPROVEMENT CANDIDATES

LIKELY IMPROVERS

- **Public Assembly** - Drops from G3 loss (5th) with legitimate excuse (9f off slow pace). Returns to preferred 1m distance where she won G3 Royal Heroine. Philip D'Amato 22% SA meet. Perfect course record (2-for-2 at distance).
- **Vibez** - Freshened after G1 Matriarch attempt. Class drop from G1 to G3. Won G3 Swingate at exact course/distance. Hernandez connection strong (20% SA). Proven distance specialist (3-for-5 at 1m turf).
- **Will Then** - Class drop from G1 American Oaks attempt. Returns to preferred 1m distance (3-for-5 record). Jonathan Thomas 27% win rate. Eleven-month gap since last 1m win suggests readiness.

BOUNCE RISKS

- **Going Lucky** - Single turf start, facing 500% class hike from N3L allowance. Zero graded stakes experience. Unproven beyond maiden/allowance level.
- **Violeta M (Arg)** - Argentine form hasn't translated to U.S. (0-for-3 stateside). Multiple G1 placings in Argentina but faded badly in both U.S. stakes attempts. Trainer 4% SA meet.
- **Sigh No More (Ire)** - First start for new trainer D'Amato after 126-day layoff. Removes blinkers (40% D'Amato stat positive). Zero U.S. wins at 1m turf (0-for-2). Irish form unproven transfer.

WIN PROBABILITY & FAIR ODDS

HORSE	WIN PROBABILITY	FAIR ODDS	LIKELY ODDS
Public Assembly	30%	5-2	5-2
Vibez	22%	7-2	9-2
Will Then	16%	11-2	4-1
Princesa Moche (Per)	14%	6-1	5-1
My Perfect Wave	10%	9-1	6-1
Going Lucky	5%	19-1	6-1
Sigh No More (Ire)	2%	49-1	10-1
Violeta M (Arg)	1%	99-1	30-1

WAGER RECOMMENDATIONS

WIN WAGER VIBEZ (Value Overlay) - Model predicts 22% win probability at projected 9-2 odds (5% edge). Proven G3 winner at exact course/distance (Swingate Stakes). Freshened since G1 attempt, class drop perfect. Distance specialist (3-for-5 at 1m turf, all three wins at distance). Hernandez connection 20% SA, barn strong at 18%. Tactical speed allows perfect stalking position. D'Amato freshened runners excel. Natural fit for conditions.

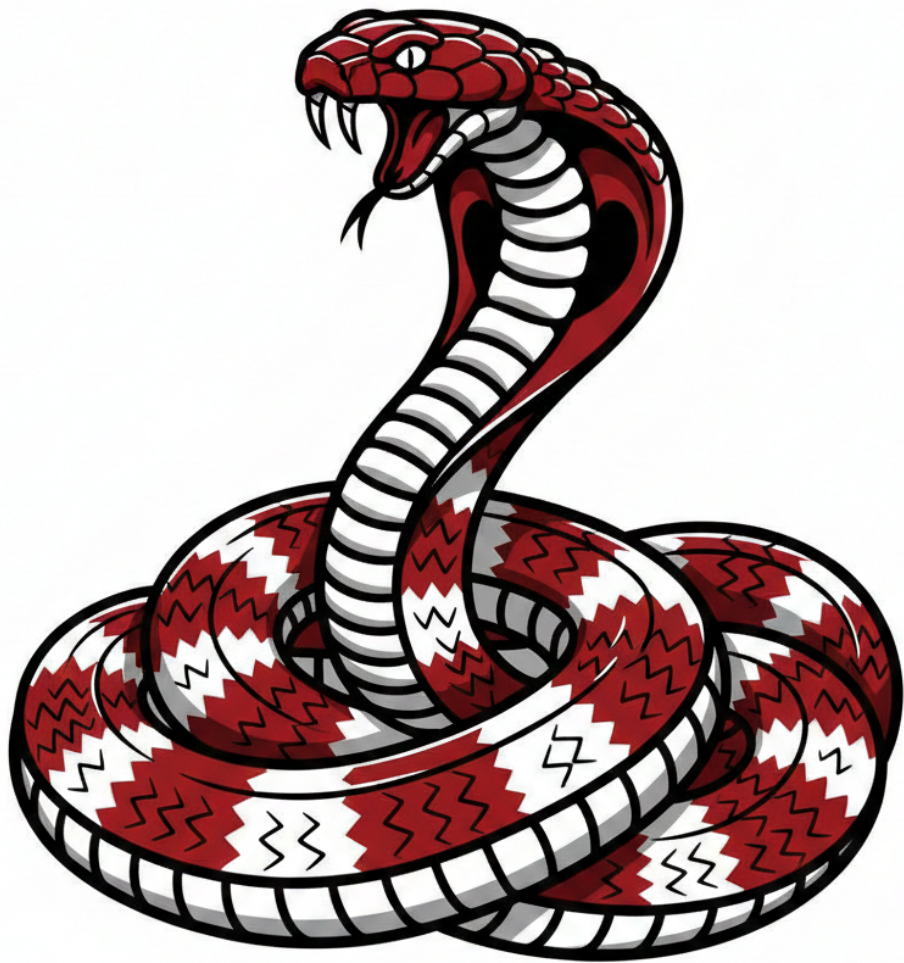
SECONDARY WAGER WILL THEN (Strong Value) - Model projects 16% win probability at projected 4-1 odds (4% edge). Returns to preferred 1m distance (3-for-5 record including China Doll Stakes win at SA). Class drop from G1 American Oaks ideal. Jonathan Thomas 27% win rate, 22% turf routes. Mike

Smith upgrade significant. Eleven months since last 1m victory suggests peak readiness. Natural closer benefits from expected pace scenario.

MULTI-RACE WAGERS (Top 3 by Win Probability)

1. **Public Assembly** (30%)
2. **Vibez** (22%)
3. **Will Then** (16%)

MODEL CONFIDENCE: HIGH - Class/distance specialists dominate top three. Vibez offers best value as proven course/distance winner dropping from G1 to G3. Public Assembly clear favorite but vulnerable to proven specialists at this specific distance. Going Lucky severely overbet based on single turf start facing massive class hike.



Gambling is a significant risk investment. Only gamble with recreational money and money you can afford to risk and potentially lose. If you possibly have a gambling problem, you should always seek professional help